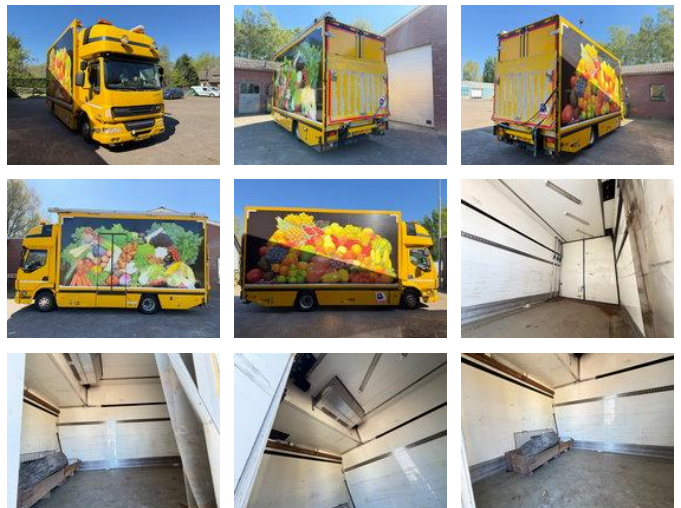




DAF LF 250 / Thermo King MD-300 / Dhollandia Laadklep / Automaat / Airco / Euro5 / Topsleeper

General features

Brand	DAF
Model	LF 250
Subcategory	Refrigerated
Licence plate	BV-LB-11
Construction year	2008
Date of first registration	30-09-2008
Color	Yellow
Condition	Used
General condition	Good
Fuel	Diesel
Emission class	Euro 5



Characteristics

Empty weight	6.870kg
Load capacity	5.130kg
GVW	12.000kg
Length	733cm
Width	255cm

Cabin

Sleeper cabin

Cylinder contents

6.693cc

DAF LF 250 / Thermo King MD-300 / Dhollandia Laadklep / Automaat / Airco / Euro5 / Topsleeper

Technical specifications

Number of axes	2
Axis configuration	4x2
Transmission	Automatic
Engine output	182

Accessories

- 2 pedal control
- 3rd valve
- 4rd valve
- 5rd valve
- Airbags
- Automatic
- Onboard Computer
- Cabin
- Central doorlocking
- Climate control
- Electric windows
- Closed cabin
- Tail lift
- Air suspension system
- Air Suspension Seats
- Metallic paint
- Passenger seat
- Radio/Cd/Audio system
- Spotlight rear
- Spotlight front
- Heater
- Front window
- Rotating beacon
- Central locking
- Sleeper cab
- Speed limiter
- Side door
- STEELSUSPENSION
- Radio/cassette player
- Visor
- Spoilers
- Toolbox
- Coupling
-